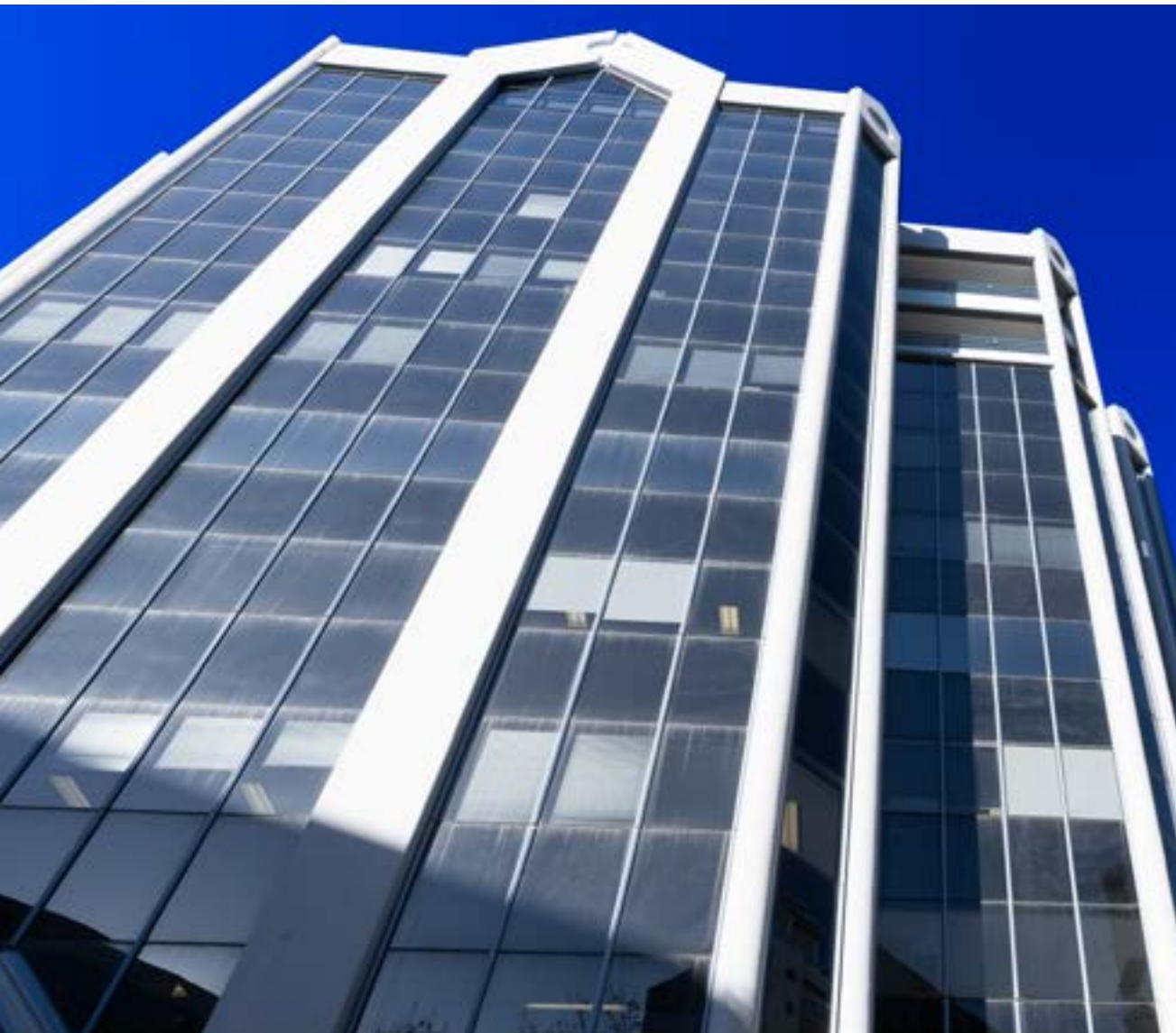




Your
Future
Begins
with
English.

Address: Ground & L3/187-189 Thomas St, Sydney, NSW, 2000 Australia
Email: info@abbeycollege.edu.au | Tel: +61 2 9055 8558

CRICOS 02658G | RTO 91136



Sydney
Ground &
L3/187-189
Thomas
St, Sydney,
NSW,
Australia



**“Experience
The Power of
English
With Alpha.”**

WHAT CAN WE DO FOR YOU at **alpha**

At our school, the mission is to empower our students to achieve their language goals and become confident, effective communicators in English. We believe that language learning is not just about memorizing vocabulary and grammar rules but also about developing critical thinking skills, cultural awareness, and an appreciation for the diversity of the English-speaking world.

To achieve our mission, we have developed a rigorous and comprehensive curriculum that covers all aspects of the English language, including grammar, vocabulary, reading, writing, listening, and speaking skills. Our classes are taught by experienced and qualified teachers who are dedicated to helping students achieve their full potential.

We also offer a range of extracurricular activities and resources, such as language clubs, conversation groups, and online learning platforms, that allow students to practice their language skills in a variety of contexts and settings.

Ultimately, our English school's mission is to prepare our students to succeed in a globalized world, where English is the lingua franca of business, academia, and culture. We believe that by mastering the English language, our students can expand their horizons, pursue their passions, and make a positive impact in their communities and beyond.

It's important to set clear goals, practice regularly, immerse yourself in the language, find a learning partner, get feedback on your progress, use a variety of resources, and most importantly, enjoy the process! By following these tips, you can improve your English skills and make the learning experience more effective and enjoyable.



LOGIC ENTITY AUSTRALIA Pty Ltd, trading as Abbey College Australia, Alpha English Academy. Through 18 years of a successful story, Abbey College Australia have graduated dozens of thousand of students from all over the world and proudly became one of the leading education providers in Sydney, and the collaboration with Alpha English Academy continues to thrive seamlessly.



The online test is intended to evaluate the English proficiency level of students and estimate the duration required for the English course. Initially, it focuses on assessing language skills such as grammar, reading and writing. The speaking and listening components, if deemed necessary, can be scheduled for a later stage at the teacher's discretion.



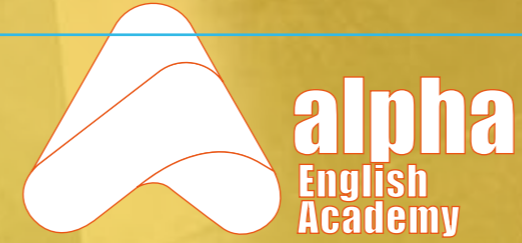
Let's prioritize the results: After receiving and approving all required documents. 24 HOURS Offer Guaranteed





**Prime Location
TWO minutes
from
Central Station.**

**And
Many
More...**



AUD\$300 /WEEK



ELICOS	Monday	Tuesday	Wednesday	Thursday	Friday
INTENSIVE 20 Hours (Morning)	8:30am-1:30pm	8:30am-1:30pm	8:30am-1:30pm	8:30am-1:30pm	Nil
INTENSIVE 20 Hours (Evening)	4:00pm-9:15pm	4:00pm-9:15pm	4:00pm-9:15pm	4:00pm-9:15pm	Nil
COURSE	General English IELTS Preparation	General English IELTS Preparation	General English IELTS Preparation	General English IELTS Preparation	Nil

PACKAGE WITH Abbey College

No ELICOS Teaching Material fee charged if package with Abbey College
Students are required to pay the enrollment fee only once if package

OTHER FEES:

Enrolment Fee : AUD\$200 (student visa) | other visas: AUD\$100
Teaching Material Fee: AUD\$10/week (max. AUD\$200)

CHICK HERE TO TAKE THE ENTRY TEST

**Your
Future
Begins With
English!**

THANK YOU.

